

# **Smoothing and Expanding SUIJI Agenda**

**Herry Suhardiyanto**

**Rector**

**Bogor Agricultural University (IPB)**

**Kochi, 29/08/2013**



# **Issues in SUIJ Consortium Establishment (the First SUIJ Seminar, 24/07/2011)**

- 1. Internationalisation strategy in SUIJ consortium;**
- 2. Role of higher education on Human Resource Development;**
- 3. Research areas on SUIJ agenda for collaboration among SUIJ consortium.**



# Internationalisation and Human Resource Development

(the First SUII Seminar, 24/07/2011)

## Global problems:

- World food security
- Energy crisis
- Environment degradation

**Higher Education on  
Sustainable Agriculture in the Tropics**



# Research Areas on SUIJI Agenda

(the First SUIJI Seminar, 24/07/2011)

1. Forestry
2. Environment control
3. Functional foods
4. Fisheries and marine sciences
5. Hydrology and micrometeorology
6. Soil sciences and nano technology



## Forestry

**Primary successsion and rehabilitation (in post-eruption mountain in the tropics), rehabilitation of tropical forestland, agroforestry, etc with multi-disciplinary approach;**

## Environment Control

**Speaking Plant Approach, monitoring plant physiological status, plant diagnosis, plant factory, concurrent engineering, intelligent greenhouse system, energy-efficient control, etc.**



## Functional Foods

**Phytochemicals in vegetables and fruits, bioactive substances, antioxidants from tropical spices and herbs, food for specified health use, functional ingredients, etc.**

## Fisheries and Marine Sciences

**Biodiversity, sustainable aquaculture, finfish & shrimp culture, vaccine for infectious fish diseases, microbes, probiotics to prevent diseases, improvement larva culture, etc.**



## **Hydrology and Micrometeorology**

**Sustainable forest management, optimum forest coverage and watershed, hydrological based estimation, global standard solution for forest management, etc.**

## **Soil Sciences and Nano Technology**

**Synthesis, modification, characterization of nano-particles in soil environment, nano-composite materials, computational modeling chemistry, application of nano-technology, etc.**



# SUIJI Model:

Forestry

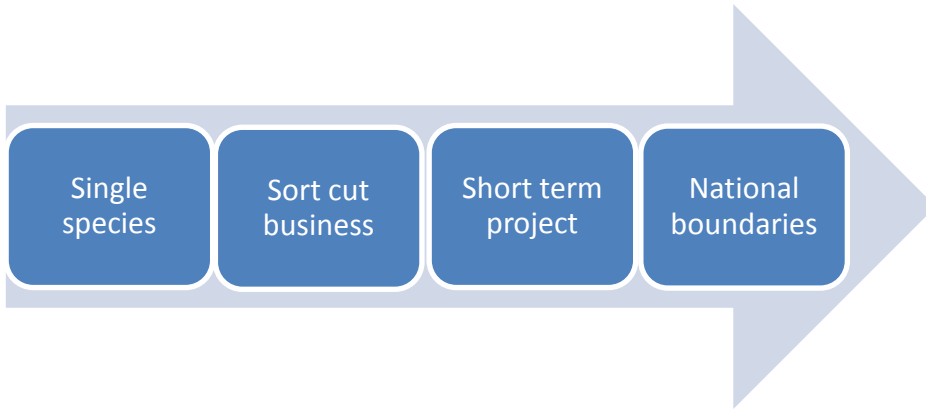
Environment Control

Functional Foods

Fisheries and marine sciences

Hydrology and micrometeorology

Soil sciences and nano technology



- *Ecosystems oriented*
- *Biobased economy*
- *Long-term joint research*
- *Internationally recognized*

**SUIJI JDP and SUIJI SLP**





# **Lesson Learnt from Implementation of Servant Leadership in Bogor Agricultural University Management**

- **2007:**

**Five Years Strategic Plan (2008-2013) proposed servant leadership as the approach in university management.**

- **2008-2013:**

**The management serves professors and academic staffs, supporting staffs, and students not being served by others;**

**Establishment of university values and principles of “IPB first”, “resource sharing”, “unity in one system” in the university management have been very effective to increase university performance.**

# The Purpose of Establishing SUII Consortium (Agreement, Febr-March, 2011)

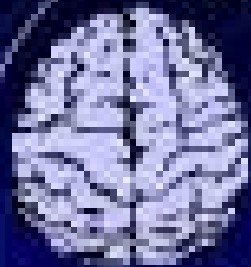
To contribute to the **development** of agriculture and the **conservation** of biological resources in the tropics;

Development and Conservation:  
co-existence, local wisdom, dialogue,  
to hear, to discuss, etc.





# Servant Leadership Model



Management

HEAD



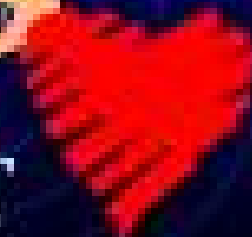
Servitude

HANDS

Servant  
Leadership

Leadership

HEART



resultcenter's

© 2008 All Rights Reserved

# SUIJI Achievement (1)

- **Consortium:**
  - **SUIJI Promotion Office/Coordinator**
  - **Funding from JSPS through Reinventing Japan 2012-2017**
  - **Funding from JASSO for student mobility**
  - **Regular Operating Council Meeting and Seminar**



# SUIJI Achievement (2)

Student Mobility	SLP		JDP	
	2012	2013	2012	2013
From Indonesia to Japan	8	33	5	6
From Japan to Indonesia	49	70	2	8



# Smoothing SUII Agenda (1)

- **Academic calendar: IPB goes to field (flexibility in scheduling)**
- **In addition to MEXT funding for SLP, JDP: support from Dikti (I), local government (J/I), private sector (J/I)**
- **Relevance of program: mainstreaming agriculture (IPB 2014-2018 strategic plan)**
- **Evaluation of six research fields : short term research stay, joint supervision.**



# Smoothing SUIJI Agenda (2)

	SLP	JDP
<b>Matching research plan both sides</b>		√
<b>Matching length of stay with recognition in academic program</b>	√	
<b>Expanding participant from all faculties in each member university</b>	√	√
<b>Blending financing from various sources for sustainability of funding</b>	√	√





# Expanding SUIJ Agenda

- Smoothing SUIJ agenda is urgently needed before expanding membership;
- Increasing SUIJ Promotion Office/Coordinator meeting (once a year to twice a year, back to back with SLP);
- Starting JDP for doctoral course and initiating discussion to prepare DDP for doctoral course in 2014
- Welcoming associate member in next meeting in Hasanuddin University, 2014.



# THANK YOU

